

LIVE

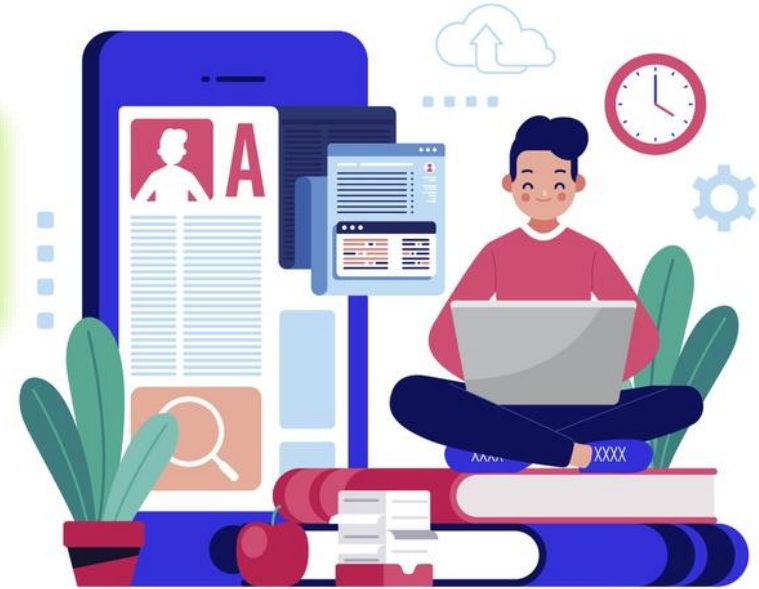


राष्ट्रीय परीक्षा एजेंसी
National Testing Agency
Excellence In Assessment

UGC-NET 2021

Teaching Aptitude

Learners Characteristics



Live Time- 11:00 AM By-Jitendra Goswami

www.Fillerform.inf Fillerform Paper 1st **LIVE**

4



I m, Jitendra Goswami

Ph.d(P),MCA,BCA

NET+GATE

Google Student

1+ Year Online teaching



91-8209837844



Filleform





Filleform

- +91 81453 66384 joined using this group's invite link
- +91 70102 37343 joined using this group's invite link
- +91 96672 47765 joined using this group's invite link
- +91 98557 99207 joined using this group's invite link
- +91 60035 13791 joined using this group's invite link
- +91 83590 38670 joined using this group's invite link
- +91 91497 27505 joined using this group's invite link
- +91 70910 66218 joined using this group's invite link
- +91 75779 16791 joined using this group's invite link
- +91 60035 13791 left
- +91 90012 26665 joined using this group's invite link
- +91 80037 25657 joined using this group's invite link
- +91 89555 46730 joined using this group's invite link

December 28

Channel created

Channel photo changed

1,711 Posts 6,845 Followers 7 Followings





Govt job 2020 (Fillerform) 17K
Education Website
Free Online Computer Class 🏆

1. Baisc computer
2. Web development
3. Hackig ... more

youtu.be/mIfPC5C-EvQ
Jaipur, Rajasthan

Edit Profile

Promotions Insights Contact



Mission JRF

UGC-NET Dec Exam 2021

Monday to Saturday

**11
AM**

1st Paper (Imp. Topic)

**07
PM**

1st Paper (MCQ 25+)

**11
AM**

Sunday Class 2hr+



fillerform www.fillerform.info

Unit-I

Teaching Aptitude

- Teaching: Concept, Objectives, Levels of teaching (Memory, Understanding and Reflective), Characteristics and basic requirements.
- Learner's characteristics: Characteristics of adolescent and adult learners (Academic, Social, Emotional and Cognitive), Individual differences.
- Factors affecting teaching related to: Teacher, Learner, Support material, Instructional facilities, Learning environment and Institution.
- Methods of teaching in Institutions of higher learning: Teacher centred vs. Learner centred methods; Off-line vs. On-line methods (Swayam, Swayamprabha, MOOCs etc.).





- ✓ Personal
- ✓ Academic
- ✓ Social or Emotional
- ✓ Cognitive

1. निजी
2. अकादमिक
3. सामाजिक या भावनात्मक
4. संज्ञानात्मक

10 Characteristics of Learner-Centered Experiences



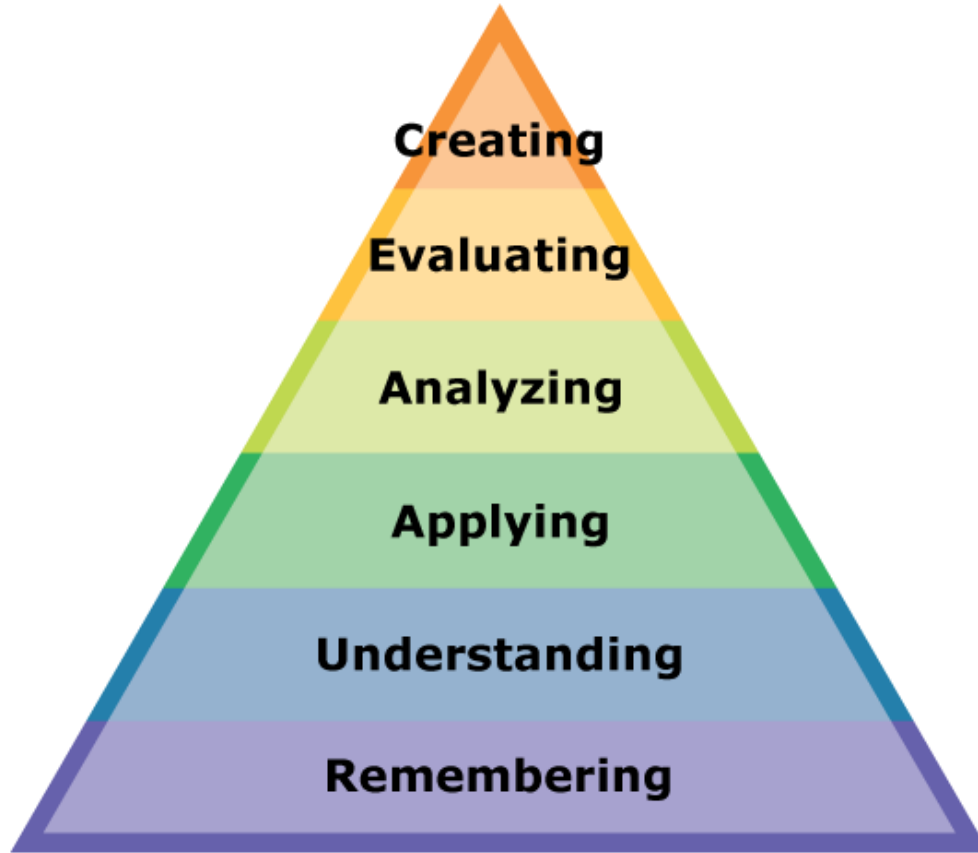
Learners Characteristics

- ✓ Make use of Knowledge's
- ✓ Share Knowledge
- ✓ Free From Bad Habit
- ✓ Free From Negative Emotions
- ✓ Fast Learn
- ✓ Good Undertaking
- ✓ Find time for aim
- ✓ Enjoy Learning
- ✓ Learn New thing



- ✓ ज्ञान का उपयोग करें
- ✓ शेयर का ज्ञान
- ✓ फ्री फॉर्म बैड हैबिट
- ✓ नकारात्मक भावनाओं से मुक्त
- ✓ तेजी से जानें
- ✓ अच्छा अंडरटेकिंग
- ✓ लक्ष्य के लिए समय निकालें
- ✓ सीखने का आनंद लें
- ✓ झुक नई बात

bloom taxonomy



bloom taxonomy

KSA

K- Knowledge

S-Skills

A-Attitude

Individual Differences Among Learners

शिक्षार्थियों के बीच व्यक्तिगत अंतर







- ✓ Intelligence
- ✓ Attitude
- ✓ Age
- ✓ Motivation
- ✓ Prior
Knowledge
- ✓ Health
- ✓ Environment

1. बुद्धि
2. रवैया
3. उम्र
4. प्रेरणा
5. पूर्व ज्ञान
6. स्वास्थ्य
7. वातावरण



Feedback